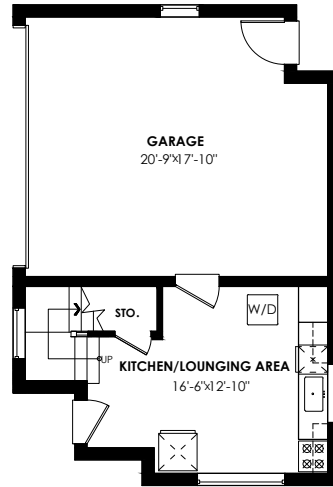


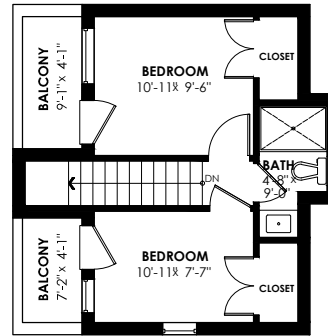
Laneway Home Main Floor Plan

Floor Area: 287 sq.ft.
Ceiling Height: 9'-1"



Laneway Home Upper Floor Plan

Floor Area: 393 sq.ft.
Ceiling Height: 8'-5"



Main Home

Lower Floor: 1,511 sq. ft.
Main Floor: 1,483 sq. ft.
Upper Floor: 1,255 sq. ft.

Livable Total: 4,249 sq. ft.

Laneway Home

Main Floor: 287 sq. ft.
Upper Floor: 393 sq. ft.

Livable Total: 680 sq. ft.

Livable Grand Total: 4,929 sq. ft.

Deck: 384 sq. ft.

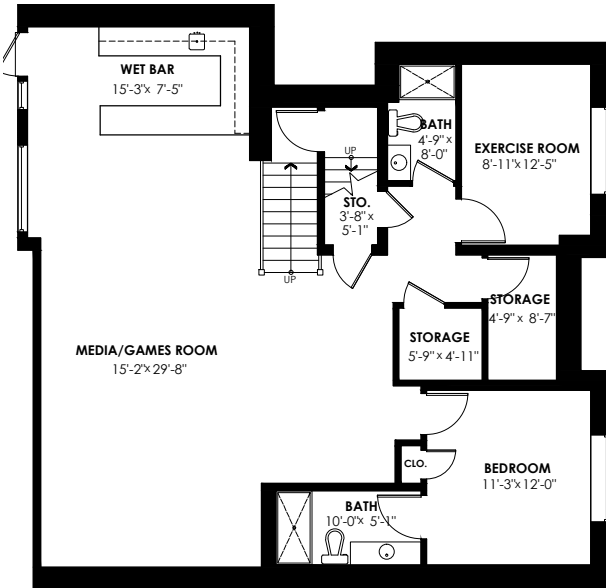
Balcony: 85 sq. ft.

Total Extras: 469 sq. ft.

Garage 405 sq. ft.

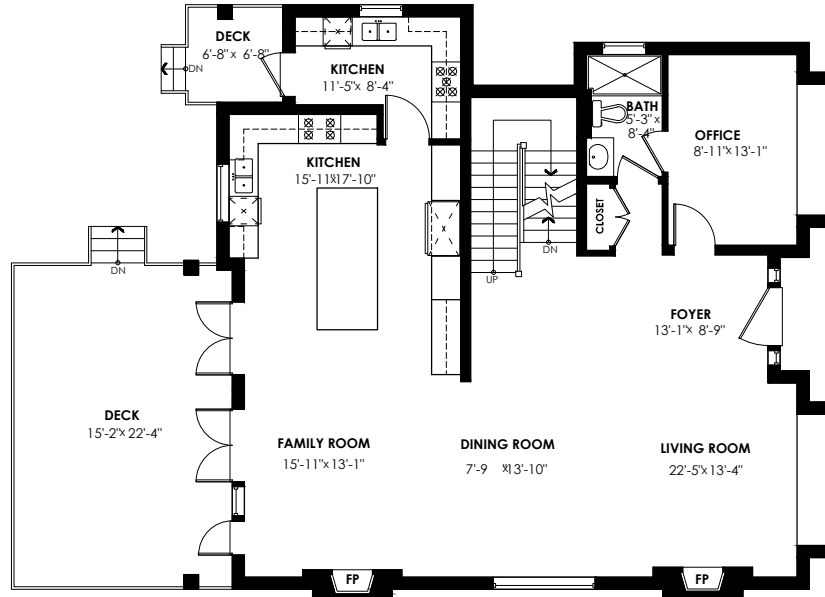
Lower Floor Plan

Floor Area: 1511 sq.ft.
Ceiling Height: 9'-8"



Main Floor Plan

Floor Area: 1483 sq.ft.
Ceiling Height: 11'-5"



Upper Floor Plan

Floor Area: 1255 sq.ft.
Ceiling Height: 9'-6"

